

# STORAGE TANKS

## Standard Stock Un-Jacketed Storage Tanks

State commercial hot water storage tanks are designed to be used in conjunction with gas/electric water heaters and boilers to provide additional hot water storage capacity for systems with large hot water draws. State storage tanks are designed and recommended for systems operating up to 180°.



- **Glass-Lined** – All internal surfaces exposed to water are glass-lined per ASME HLW procedures, using an NSF approved glass-lining compound. Glass is highly resistant to effects of temperature, corrosion, and electrolysis.
- **Sizes From 80 to 1,000 Gallons** – All tanks in table on reverse side are normally carried in stock. ASME construction available on all except 80 and 120 gallon size.
- **Horizontal or Vertical Mounting** – The State standard stock tanks (except the 80 and 120 gallon tanks) are shipped factory standard with leg sockets for vertical installation, but are also designed and have the proper inlet/outlet openings that allow for horizontal installation. For horizontal installations, optional tank saddles are required.
- **Magnesium Anodes** – For added corrosion protection.
- **Working Pressures** – Tanks tested at test pressures assigned in accordance with working pressures shown in table on reverse side.
- **Options**
  - ASME and National Board Certification sheets
  - Tank saddles - two per horizontal tank required.
- **Five-Year Limited Tank Warranty**

**NOTE:** State also offers a full line of custom tanks that are built to order and are available with many options such as: various working pressures, lifting lugs, handholes, manholes, special linings, special openings, factory jacket/installation, and built to military specifications. For custom tanks please see State Custom Tanks.



(ON ASME CONSTRUCTED TANKS)

For more information on Storage Tanks contact:  
 State Water Heaters  
 500 Tennessee Waltz Parkway, Ashland City, TN 37015  
 800-365-0024 Toll Free USA  
[www.statewaterheaters.com](http://www.statewaterheaters.com)

**SOLID.STATE.**



# STORAGE TANKS

## Standard Stock Un-Jacketed Storage Tanks

Model	Nominal Gallon Capacity	ASME	Working Pressure	Approx. Ship. Wt.	Refer to Figure	Dimensions In Inches												
						A	B	C	D	E	F	G	H	I	J	K	N	P
UVG 00800 OVT	80	No	150	170	1	20	61½	2	-	7	2	¾	46¼	-	16	3½	3¼	4
UVG 01200 OVT	120	No	150	287	1	24¼	64¾	2½	-	-	-	¾	34¾	-	15½	10½	3½	4¼
UVG 01400 OVTA125	140	Yes	125	400	2	24	75	2½	8	12	2½	¾	27½	1	18½	-	-	-
UVG 02000 OVT	200	No	150	460	2	30	71	2½	10	13	2½	¾	28½	1	19½	-	-	-
UVG 02000 OVTA125	200	Yes	125	460	2	30	71	2½	10	13	2½	¾	28½	1	19½	-	-	-
UVG 02500 OVTA125	250	Yes	125	505	2	30	84	2½	10	13	2½	¾	28½	1	19½	-	-	-
UVG 03500 OVT	350	No	125	670	2	36	86	2½	14	16	2½	¾	31½	1	22½	-	-	-
UVG 03500 OVTA125	350	Yes	125	670	2	36	86	2½	14	16	2½	¾	31½	1	22½	-	-	-
UVG 04000 OVTA125	400	Yes	125	775	2	36	93	2½	14	16	2½	¾	31½	1	22½	-	-	-
UVG 05000 OVTA125	500	Yes	125	815	2	42	88	2½	16	18	3	¾	33½	1	24½	-	-	-
UVG 05000 OVSA125	500	Yes	125	950	2	48	72¼	3	18	19¼	3	¾	32¼	1	26¼	-	-	-
UVG 07500 OVTA125	750	Yes	125	1290	2	48	105	3	18	19¾	3	¾	32¼	1	26¼	-	-	-
UVG 10000 OVTA125	1000	Yes	125	1655	2	48	137	3	18	19¾	3	¾	32¼	1	26¼	-	-	-

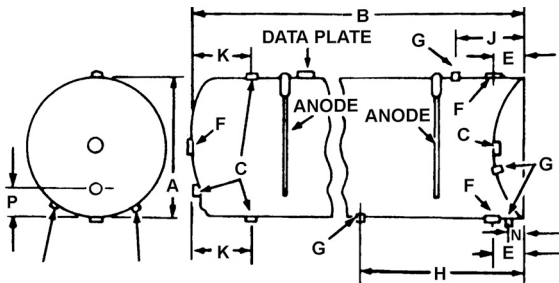


Figure 1

Part No.	Dimensions In Inches		
	Tank Dia.	A	B
S2 2600 20	20	22	6
S2 2600 24	24	26	6
S2 2600 30	30	32	6
S2 2600 36	36	38	6
S2 2600 42	42	44	6
S2 2600 48	48	50	6

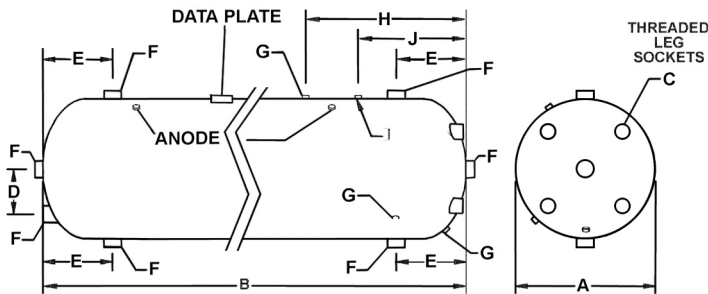
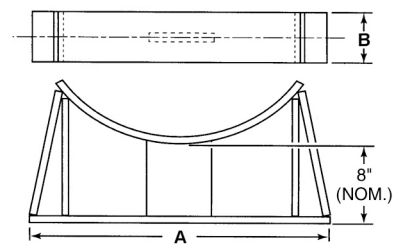


Figure 2



Tank Saddles

### Suggested Specifications

Glass-lined storage tank(s) shall be State glass-lined storage tank(s) or equal. Tanks shall be \_\_\_ x \_\_\_ and have a nominal capacity of \_\_\_ gallons. Tank(s) shall have threaded openings as shown on drawings. Exterior of tank(s) shall be thoroughly cleaned and painted. Interior of tank(s) shall be glass-lined with an alkaline borosilicate composition which has been fused to the steel base by firing at a temperature of 1600° F. All internal surfaces exposed to water are glass-lined per ASME HLW code procedures using an NSF approved glass lining compound with nickelous oxide. Cathodic protection shall be provided. They shall have a working pressure of \_\_\_ psi. Horizontal tanks shall have \_\_\_ tank saddles. Tank saddles shall have a five year limited warranty as outlined in the written warranty.

In keeping with our policy of continuous product improvement, specifications are subject to change without prior notice.

For more information on Storage Tanks contact:  
 State Water Heaters  
 500 Tennessee Waltz Parkway, Ashland City, TN 37015  
 800-365-0024 Toll Free USA  
 www.statewaterheaters.com

SOLID.STATE.

